

Points of Interest:

ID	Description
28	Redwood Ferry Ambush Site
28	Overlook & Historic Site
29	Lower Sioux Agency Warehouse
30	Minnesota Historical Society
31	Lower Sioux Agency Marker
32	Whipple Mission
33	Birch Klin
34	Railroad Roundhouse
35	Birch Coulee County Park
36	City Park of Morton
100	Beaver Falls W.M.A.
105	Birch Coulee Battlefield
106	Birch Coulee Pottery
110	Renville Cnty Historical Museum
111	Morton Pow Wow
112	Lower Sioux Agency Intarp
114	Dakota Uprising Monuments
115	Granite Quarries
133	Canoe Campsite
134	St. Cornelia's Episcopal
140	Gillfan Estate
217	Farmfest
227	Alpaca Farm
226	Jackpot Junction Casino
289	Water Access - Trailer

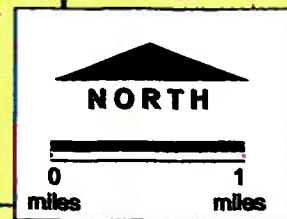
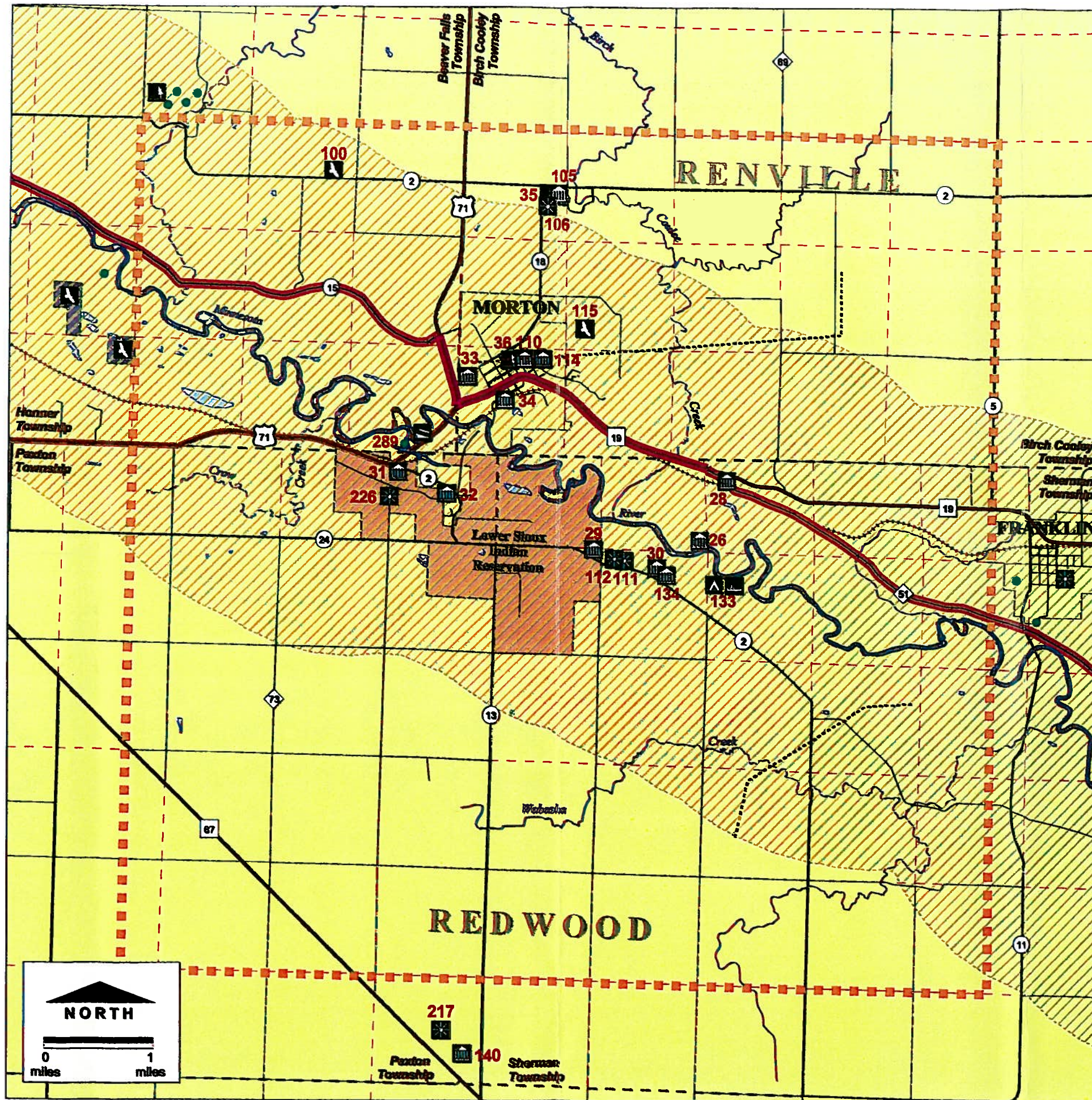
Data Source:

Base map is from the Minnesota Department of Transportation State of Minnesota Base Map '97 data set. Projection: UTM, Zone 15, Datum NAD83. Map presentation is for conceptual purpose only.

Presented by:

BRAUN
INTERTEC

Engineers and Scientists
Serving the Built and Natural Environments



Minnesota River Valley Scenic Byway



CENTRAL SECTION

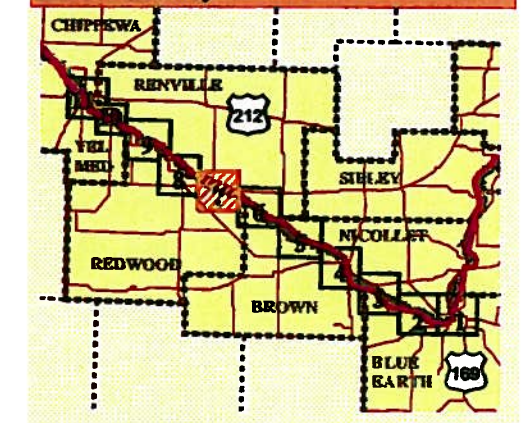
Legend:

- Minnesota River Scenic Byway
- Alternate Route
- Highway
- CSAH
- County Road
- Township Road
- City Streets
- County
- Township
- Section
- Railroad
- Lakes / River
- Streams
- W.M.A.
- S.N.A.
- Reservation
- State Park
- Municipal Boundary

Point of Interest Key:

- City
- Cultural Resource
- Historical
- Natural Resource
- Park
- Recreation
- Scenic
- Camp Site
- Hiking
- Picnic Site
- Water Access - Carry-In
- Water Access - Trailer
- Horse Trail
- Other

Sheet Index Key:



Sheet: 7 of 11

Figure: 7