

Points of Interest:

| ID | Description |
|-----|------------------------------|
| 37 | Wildlife Area |
| 38 | Wildlife Area |
| 39 | Redwood County Historical |
| 40 | Alexander Ramsey Park |
| 41 | Home of Sears & Robuck |
| 42 | Brown Fur Trading Post |
| 43 | Gold Mine Site |
| 124 | Canoe / Campground |
| 125 | Water Access - Trailer |
| 126 | Kiabunde W.M.A. |
| 127 | Delhi W.M.A. |
| 128 | Picnic Area |
| 129 | Camp Sites |
| 130 | Hiking |
| 131 | Scenic Overlook |
| 132 | Water Access -Trailer |
| 135 | Redwood County Fair |
| 136 | Redwood Co. Historic Society |
| 137 | Camp Pope |
| 138 | Redwood Falls Public Library |
| 139 | Redwood County Courthouse |
| 205 | Beaver Falls County Park |
| 206 | Water Access - Trailer |
| 207 | Redwood Co. Poor Farm Museum |
| 223 | Ski Trails |
| 224 | Zoo (with Bison) |
| 281 | Cedar Rock Ranch |
| 284 | City of Redwood Falls |

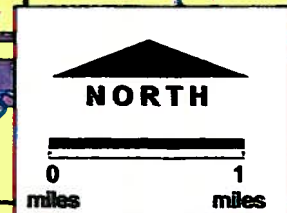
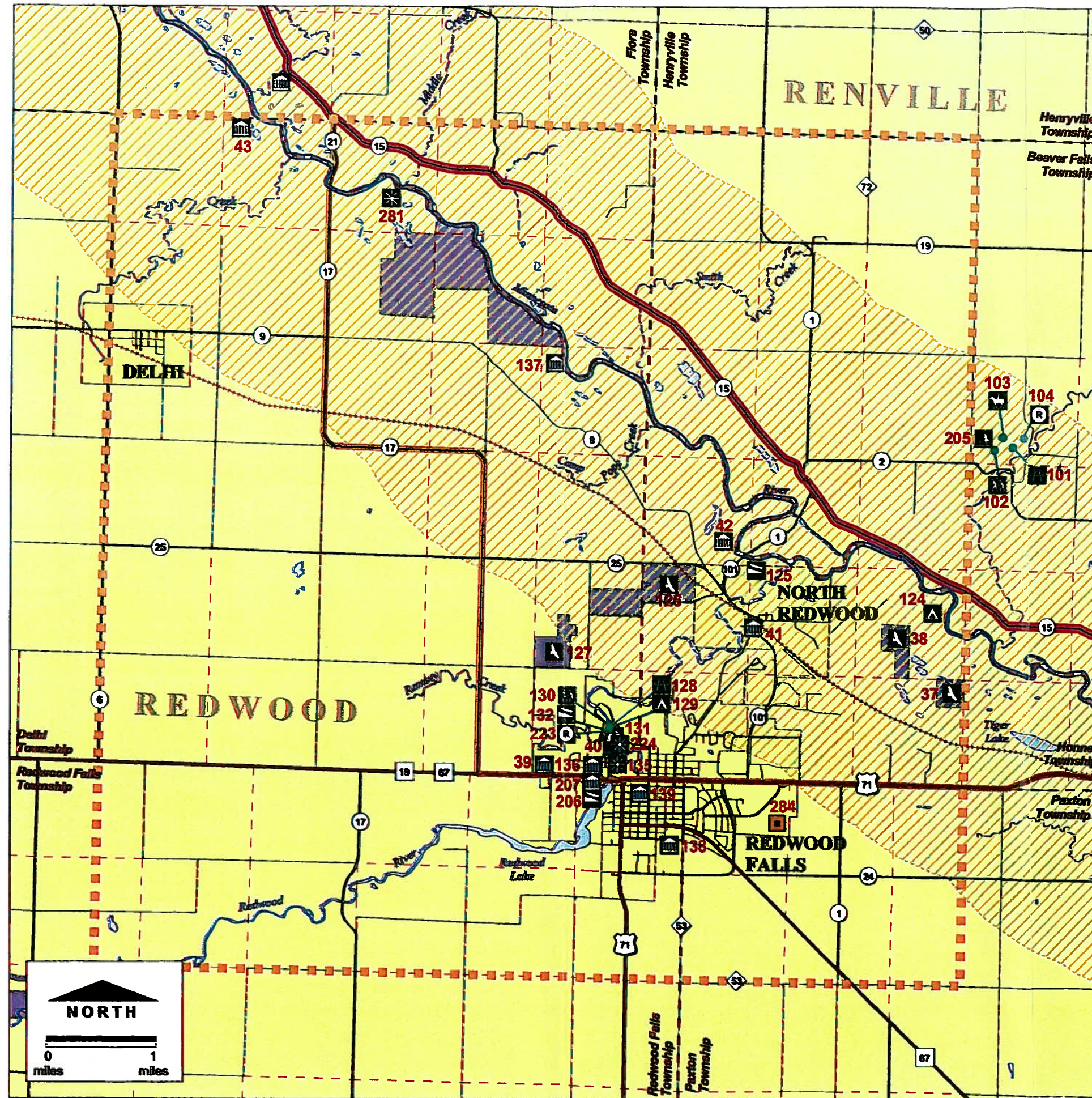
Data Source:

Base map is from the Minnesota Department of Transportation State of Minnesota Base Map '97 data set. Projection: UTM, Zone 15, Datum NAD83. Map presentation is for conceptual purpose only.

Presented by:

BRAUN
INTERTEC

Engineers and Scientists
Serving the Built and
Natural Environments



Minnesota
River
Valley
Scenic
Byway



CENTRAL SECTION

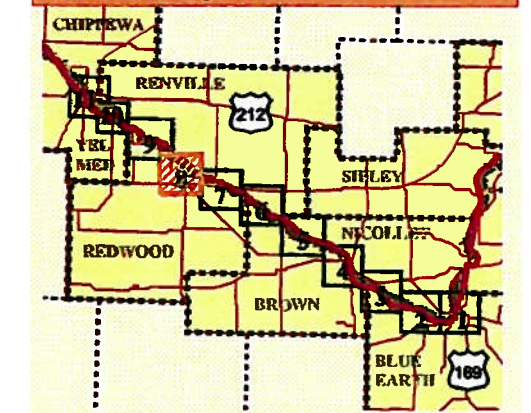
Legend:

- Minnesota River Scenic Byway
- Alternate Route
- Highway
- CSAH
- County Road
- Township Road
- City Streets
- County
- Township
- Section
- Lakes / River
- Streams
- W.M.A.
- S.N.A.
- Reservation
- State Park
- Municipal Boundary
- Railroad

Point of Interest Key:

- City
- Cultural Resource
- Historical
- Natural Resource
- Park
- Recreation
- Scenic
- Camp Site
- Hiking
- Picnic Site
- Water Access - Carry-In
- Water Access - Trailer
- Horse Trail
- Other

Sheet Index Key:



Sheet: 8 of 11

Figure: 8